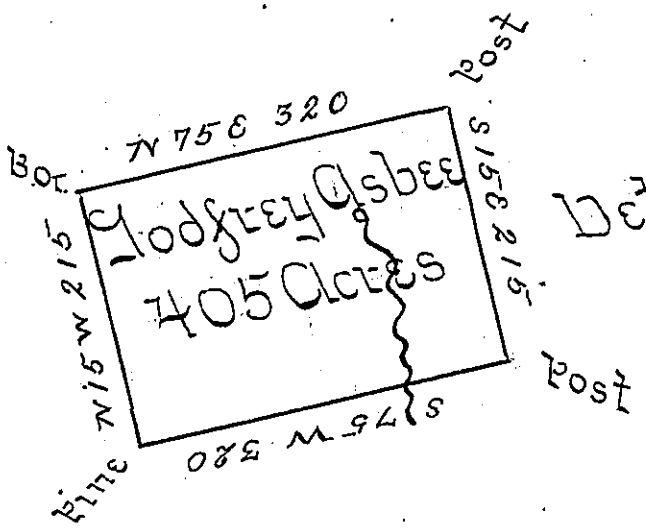


Stephen Alsbee

Moses Alsbee



Detrick Alsbee

Siles Alsbee

Situate in Northumberland County Washington Town-
 ship Containing Four Hundred & Five Acres and the
 Usual Allowance for Roads Surveyed 2^d January 1795
 In Pursuance of a Warrant dated 11th March 1794

Daniel Brodhead Esq: S.G.

Jo: J Wallis D.S.

IN TESTIMONY that the above is a copy of the original remaining on file in
 the Department of Internal Affairs of Pennsylvania, made
 conformably to an Act of Assembly approved the 16th day of
 February, 1833, I have hereunto set my Hand and caused
 the Seal of said Department to be affixed at Harrisburg,
 this fourth day of March 1902.

James W. Pitt
 Secretary of Internal Affairs.